

# MICHELIN XMIINE D2

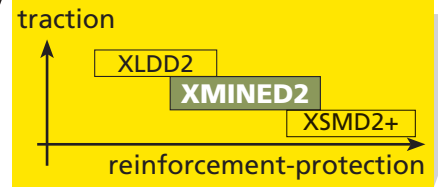
The L5R tyre for extreme loading conditions

Exceptionally robust  
in masacre conditions

Excellent compromise  
of adhesion and traction



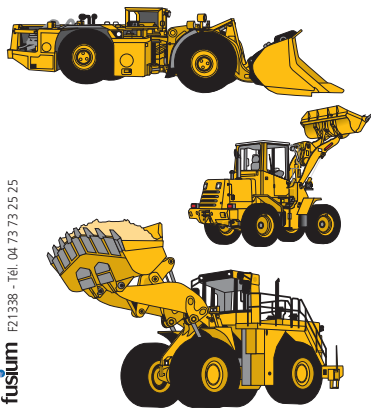
# MICHELIN X MINE D2



## The L5R tyre for extreme loading conditions

SIZES	TREAD DEPTH	
	mm	32 <sup>nd</sup> inch
7.50 R 15 TT	46	58
8.25 R 15 TT	48	60.5
10.00 R 15 TT	48	60.5
350/65 R 15 TL	36	45.4
400/80 R 15 TL	34	42.8
14.5 R 15 TL	48	60.5
9.00 R 20 TT	51	64.3
12.00 R 20 TT	57	71.8
14.00 R 20 TL	48	60.5
12.00 R 24 TL	57	71.8
15.5 R 25 TL	60	75.6
16.00 R 25 TL	73	92
17.5 R 25 TL **	65	81.9
18.00 R 25 TL **	82	103.3
20.5 R 25 TL **	74	93.2
23.5 R 25 TL **	83	104.6
26.5 R 25 TL **	91	114.6
29.5 R 25 TL **	100	126
29.5 R 29 TL **	100	126
35/65 R 33 TL **	93	117.2
45/65 R 39 L5R TL **	116	146.1
45/65 R 45 L5R TL **	116	146.1
55/80 R 57 L5R TL * (#)	119	149.9
60/80 R 57 L5R TL * (#)	118	148.7
50/65 R 51 HR TL **	116	146
50/65 R 51 SR TL **	116	146

(#) available in LC L5R, SR L5R and HR L5R

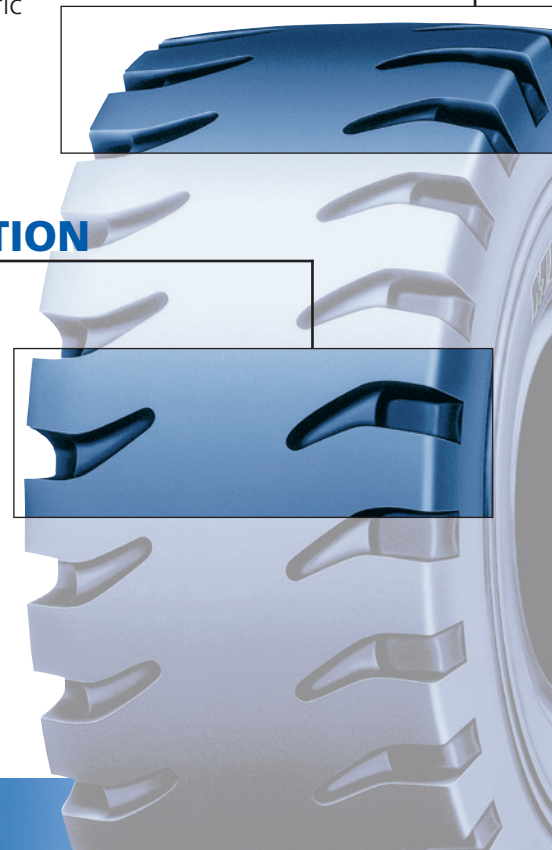


### EXCEPTIONALLY ROBUST IN MASACRE CONDITIONS

- A substantial crown, robust shoulders reinforced with a protection band make up a tyre particularly resistant to shock ruptures, cuts and tread tearing
- A particularly resilient casing with the addition of several specific steel belts constitute a tyre that is very resistant to punctures

### EXCELLENT COMPROMISE OF ADHESION AND TRACTION

- A very substantial, wide and aggressive tread functions perfectly to produce a good compromise between adhesion, traction and damage resistance



REPAIRABILITY AND RETREADABILITY MAXIMIZED THANKS TO THE EXTREME RELIABILITY OF THE CASING (##)

(##) provided that the worn tyre answers criteria of retreading and/or repair.

#### BENEFITS OF THE MICHELIN® RADIAL TECHNIQUE

- longer tyre life
- better traction on all types of surface
- lower fuel consumption
- improved comfort
- increased resistance to punctures / flats
- increased heat resistance

