

MICHELIN X-CRANE +

Lifting your productivity to new heights



More profitable operations
Enhanced security
More environmentally friendly

MICHELIN X-CRANE +

Lifting your productivity

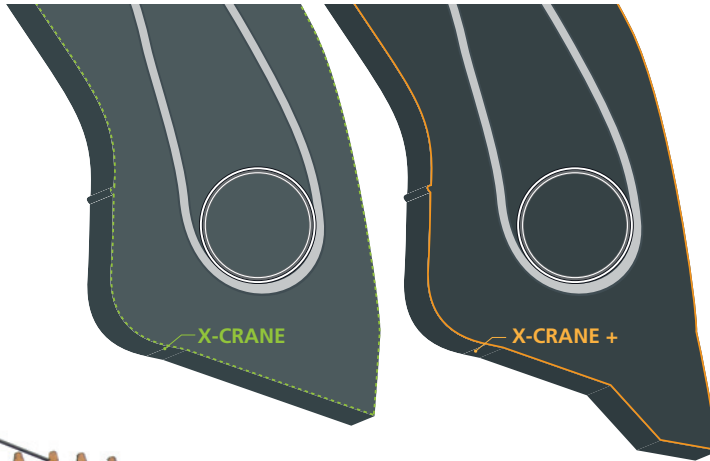
➤ MORE PROFITABLE OPERATIONS

■ LOWER OPERATING COSTS

- Wear life increased by up to 15% (#)
 - Thanks to a new, more resistant rubber compound in the tread

■ KEEP MACHINES OPERATING

- Easier to mount (#)
 - Thanks to the optimized geometry of the tyre/rim contact surface



(#) compared to the Michelin X-CRANE or XGC tyre depending on dimension

to new heights

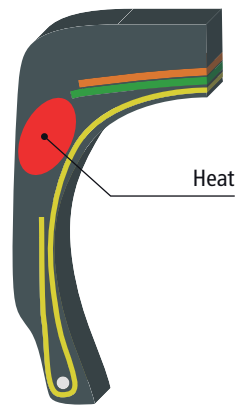
➔ ENHANCED SECURITY (#)

■ GREATER OPERATOR COMFORT

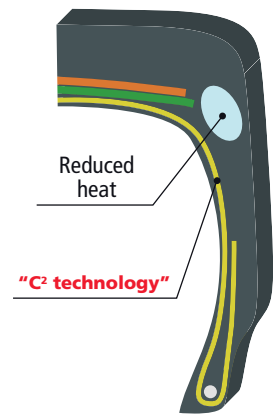
- Improvement in irregular wear patterns so that the crane generates fewer vibrations
- Thanks to a more rigid rubber compound in the tread

■ RELIABILITY

- Thanks to a better resistance of the cables
- Thanks to the C² Technology
- Thanks to a longer-lasting bead area



Standard design

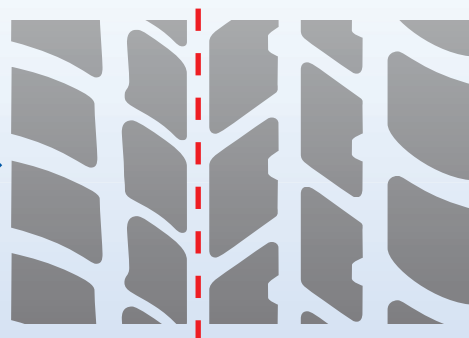


"C² technology"
(square design)

➔ BENEFITS OF THE X-CRANE THE HIGH-PERFORMANCE X-CRANE TREAD

- Shorter braking distances
- Greater versatility of use (roads and worksite approach routes) thanks to an asymmetric tread pattern
 - To derive fully benefit from the tread, the tyre should be mounted as indicated by the words "OUTSIDE VEHICLE FOR OPTIMUM HANDLING" on the tyre.

Inside:
small blocks
provide comfort
and precision handling



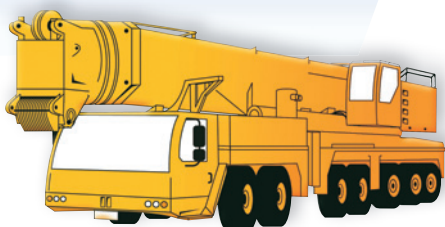
Outside:
large blocks
provide traction
on soft-ground
(worksite approach
roads)

MICHELIN X-CRANE +

Lifting your productivity to new heights

SIZE	TREAD DEPTH	
	mm	32 nd pouce
445/95 R 25 TL 174F (##)	25	32
525/80 R 25 TL 176F	28	35

(##) complies with STGO standards for the UK market;
STGO = Special Type General Order



➤ MORE ENVIRONMENTALLY FRIENDLY (#)

LESS WASTE

- Tyres can be regrooved
- Increased longevity up to 15%

FREE OF AROMATIC OILS

ISO 14001 CERTIFICATION

- Michelin tyres are manufactured in our ISO 14001 certified factories, where environmental impact has been reduced by more than 16% since 2005.

(Michelin Environmental Footprint)



REPAIRABLE AND TECHNICALLY REGROOVABLE TYRE

(#) compared to the Michelin X-CRANE or XGC tyre depending on dimension.

BENEFITS OF THE MICHELIN® RADIAL TECHNIQUE

- longer tyre life
- better traction on all types of surface
- lower fuel consumption
- improved comfort
- increased resistance to punctures / deflection
- increased heat resistance

www.michelinearthmover.com

