

MAGNA TYRES GROUP

EARTHMOVER



MAGNA MA01 E3/L3

17.5R25**

20.5R25**

23.5R25**

Get all the benefits of Magna Radial Tyre Technology!

- High resistance to impacts and cuts
- Enhanced working comfort
- Excellent traction



All Steel Radial Construction - Multifunctional

MAGNA MA01

EARTHMOVER

MAGNA TYRES develops and manufactures high quality tyres for construction and mining purposes, especially designed for the most severe applications.

This tyre is designed for use on wheel loaders, dozers, scrapers and graders.

An aggressive non-directional tread pattern provides superior traction in soft underfoot conditions.

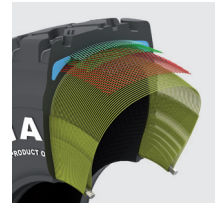
The tread compound provides excellent protection against cutting and abrasion.



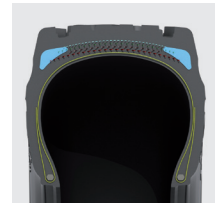
Excellent traction and outstanding stability



All steel radial construction. Improved protector plies optimize load performance and operator comfort.



New improved technology of the high-tech casing reduces heat build up inside the tyre.



Tyre size	Pattern	Tra code	Load symbol	Max. distance per hour	Overall diameter (mm)	Section width (mm)	Tread depth (mm)	Rim	Single max load/pressure	Tyre weight (kg)
17.5R25	MA01	E3/L3	**	50 km/h	1346	457	28	14.00/1.5	5450 kg/5.0 bar	154
				10 km/h					8500 kg/6.5 bar	
20.5R25	MA01	E3/L3	**	50 km/h	1473	533	31	17.00/2.0	7300 kg/5.0 bar	231
				10 km/h					11500 kg/6.5 bar	
23.5R25	MA01	E3/L3	**	50 km/h	1626	610	34	19.50/2.5	9200 kg/5.0 bar	336
				10 km/h					14500 kg/6.5 bar	

Magna Tyres Group
P.O. Box 436
5140 AK Waalwijk
The Netherlands

Magna Tyres Group
Elzenweg 7
5144 MB Waalwijk
The Netherlands

Phone: +31 416 675 220
Fax: +31 416 675 221
Email: info@magnatyres.com
www.magnatyres.com

