

MAGNA TYRES GROUP

EARTHMOVER



MAGNA MA05 L5

17.5R25**

26.5R25**

29.5R25**

Get all the benefits of Magna Radial Tyre Technology!

- Designed for extreme loader applications
- Reinforced crown and sidewall
- Extra deep tread pattern



All Steel Radial Construction - Multifunctional

MAGNA MA05

EARTHMOVER

MAGNA TYRES develops and manufactures high quality tyres for construction and mining purposes, especially designed for the most severe applications.

This tyre is designed for extreme loader applications in surface mines, quarries, scrap yards and for underground mine transport.

The crown and sidewall are reinforced to prevent damage and extend tyre life in severe operating conditions.

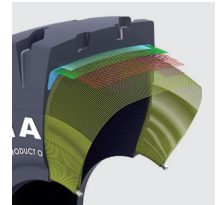
Operator comfort and machine maintenance are enhanced by not having to resort to the use of solid or foam filled tyres.



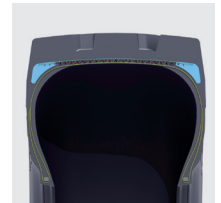
The extra deep L5 rock tread and reinforced shoulders and sidewalls prevent damage in severe operating conditions.



All steel radial construction. Improved protector plies optimize load performance and operator comfort.



New improved technology of the high-tech casing reduces heat build up inside the tyre.



Tyre size	Pattern	Tra code	Load symbol	Max. distance per hour	Overall diameter (mm)	Section width (mm)	Tread depth (mm)	Rim	Single max load/pressure	Tyre weight (kg)
17.5R25	MA05	L5	**	6 km/h	1397	483	65	14.00/1.5	7100 kg/5.0 bar	251
26.5R25	MA05	L5	**	6 km/h	1803	686	91	22.00/3.0	15000 kg/5.0 bar	651
29.5R25	MA05	L5	**	6 km/h	1905	787	100	25.00/3.5	17950 kg/5.0 bar	838

Magna Tyres Group
P.O. Box 436
5140 AK Waalwijk
The Netherlands

Magna Tyres Group
Elzenweg 7
5144 MB Waalwijk
The Netherlands

Phone: +31 416 675 220
Fax: +31 416 675 221
Email: info@magnatyres.com
www.magnatyres.com

